

Healthcare Cleaning Solutions by Geerpres®



Comprehensive Integrated Cleaning Solutions

In business for over 80 years, Geerpres® offers a comprehensive approach to cleaning solutions, specializing in the healthcare industry. Our system includes EVS carts, mopping systems, Advantex® microfiber (single-use) products, EVS management software, and air disinfection technology.

Geerpres® is focused on driving labor efficiencies, providing premier products, and reducing HAIs in an environmentally conscious manner.

Geerpres® delivers an integrated system that includes

- Premier, innovative equipment with proven, warrantied quality.
- Advanced supplies, providing cleaner, safer environments.
- Labor efficiency in products and technology.

Product Limited Warranties

For the period listed below, from the date of purchase, if any of these products proves defective in materials and/or workmanship during normal use by the original purchaser, Geerpres® will provide, at their discretion, repair or replacement providing all care and Maintenance procedures have been followed.

LIFETIME Limited Warranty Products:

- Enterprise® EVS Carts
- Casino 'Slot' EVS Carts



10-Year Limited Warranty Products:

- Buckets: Stainless Steel
- Wringers: Stainless Steel
- Project Trolley
- Orion Stainless Steel Cart



5-Year Limited Warranty Products:

- Wringers: Zinc-plated
- Buckets: Galvanized



Complete Integrated Solutions

EVS Carts, Collector Carts & Mopping Systems

EVS Carts

Enterprise® Cart
Project Trolley
Escort® PC Cart
Collector Carts

NEW Enterprise[®] EVS Cart

The modular Enterprise[®] EVS cart is ideally designed for the healthcare industry and configurable to suit various cleaning protocols. The Enterprise[®] is at the heart of a comprehensive approach to advanced cleaning solutions.

Enterprise[®] EVS Cart Video

<https://www.geerpres.com/resources/product-videos/>



NEW Enterprise® EVS Cart

Standard Features

- Stainless steel or powder-coated finishes
- 6.2 cubic feet of lockable storage space
- Three tray options for various mop and bucket configurations
- Magnetically secured door to assure closure in transit
- Non-marking bumpers and quiet casters
- Unbreakable Geer-Key® locking system
- 25-gallon waste bag with C-zipper and multiple pockets
- Multiple Gripit® bars, with three tool/handle holders and three hooks
- Repositioning handle adapts for varying configurations
- Cabinet mount double sign holder
- Glove box holder and trash lid



NEW Enterprise® EVS Cart

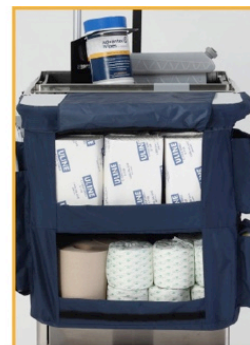
Cart Options and Accessories



Space Station®
MODEL #3885



Our E-Key® Locking System
MODEL #9972 Patent #9741189



Dry Dock Two-shelf Storage
MODEL #10007



Tablet Holder
MODEL #380036



Gripit® Tool Holders / Hooks
MODEL #5045 / #5051



Wipe Cannister Holder
MODEL #540200



Powder-coated glove box
MODEL #380037



Microfiber Bag System
MODEL #100112



Cabinet / Handle Mount
Double Sign Holder
MODEL #9916 / #9921



Sanitizer Bottle Holder
MODEL #380038

Project Trolley

Keep your healthcare environment clean and professional with an equipment cart big enough to haul everything. Our Project Trolley features 18-22-gauge, corrosion-resistant, Type 304 stainless steel construction with a 10-year limited warranty.



Project Trolley

Standard Features

- 5" double-bearing, quiet casters (two swivel and two swivel with brake)
- 6.2 cu. ft. lockable storage cabinet keeps chemicals secure • Increased productivity due to large capacity — fits everything needed for a shift and eliminates multiple trips to storage closet
- 14 tool holders to safely secure mop handles, dust mops, brooms and more
- High-quality, non-marking corner bumpers
- Access ramp has anti-slip strips and flips up for moving and storing of cart
- Heavy duty tool holder for larger equipment
- Patent pending

Project Trolley Video - <https://www.geerpres.com/resources/product-videos/>

Escort[®] PC Cart

Standard Features

- Features 4.8 cu. ft. interior storage space
- Powder-coated metal construction
- Heavy-duty 25-gallon single-zipper bag
- Front roller bumpers to protect walls and furniture



Collector Carts

Linen Hamper
Collector Carts

Linen Hamper

Designed for efficiency and safety, the Linen Hamper has a narrower profile, allowing unobstructed pathways and reduced workman's compensation claims. HCAHPS scores can be improved with a unique and silent close.

Linen Hamper Video

<https://www.geerpres.com/resources/product-videos/>



Linen Hamper

Standard Features

- Tubular steel construction for superior resilience and cleaning simplicity
- Silent close to improve HCAHPS scores
- Unbreakable steel lid with multi-lingual labels (linen, waste, hazardous)
- Professional, clean powder-coated finish
- Heavy-duty nylon pouch to retain liner(s)
- Locking front casters
- Protective measures to reduce wall damage
- Heavy-duty nylon curtain (available option)
- Designed to prevent overfilled liners and assure < 50 lb. lifting
- Narrower profile as it sits against a wall
- Optional hamper curtain available with or without custom logo
- Optional connectors to link multiple links together
- Patent pending

Collector Cart

Standard Features

- Folding chrome-plated steel frame folds and locks to a minimal size for storage
- Large 50-gallon bag
- Optional heavy-load bottom shelf for added support helps extend the life of the bag



Collector Cart XL

Standard Features

- Manage and segregate large volumes of laundry, recyclable and/or waste
- Large 5-gallon bag and two 30-gallon bags
- Compacts for easy storage



Microfiber Applicator Systems

Advantex® G8 Microfiber Applicator System

The Advantex® G8's revolutionary, large-capacity removable tank makes refilling easy. The dual outlet dispenses to provide uniform application and flow control.

Standard Features

- Unique to Geerpres® - 32 oz. refill bottle stacks on EVS carts
- Ergonomic swivel trigger
- Continuous flow when the trigger is depressed
- Dual outlet dispenses fluid at a 90° angle
- 16" Advantex® Mop Frame is designed with micro hook and loop fastening to avoid lint accumulation
- Mop frame maintains 100% surface contact
- Ideally paired with the Advantex® Single-use Mop
- Patent pending



CAT G7 – Backpack Fluid Applicator

Designed for comfort and efficiency, our lightweight chemical applicator, with ergonomic backpack is ideal for finish application or large area cleaning.

Standard Features

- Self-contained system with resealable bag
- Easy Flow Ball Valve allows for adjustable flow rate
- Sturdy, adjustable backpack design with breathable mesh
- 56 1/2" lightweight, aluminum handle
- Interchangeable 16" Cling-On® Nylon Flat Mop Frame
- 7' chemical feeder hose with cap and connector
- Refillable chemical bag (1.5-gallon capacity)
- 18" x 5" premium microfiber scrub/finish mop

Ideal Combination Includes

- Easy Refill Stand
- Pressurized Clean-out Tool (Only offered by Geerpres®.)



Flat Mop Frames

Advantex® Mop Frame

The 16" Advantex® Mop Frame makes it easy to convert your 12" and 24" flat mopping systems. The frame is also ideal for wall wash application.

Standard Features

- Frame utilizes micro hook and loop fastening
- Ideally paired with the Advantex® Single-use Microfiber Mop
- Maintains 100% uniform contact with the mop and floor surface
- Unique quick connector swivels 360° for an efficient figure eight motion and flips up for easy cleaning of baseboards
- No replacement parts or linting Velcro® strips
- Patent pending

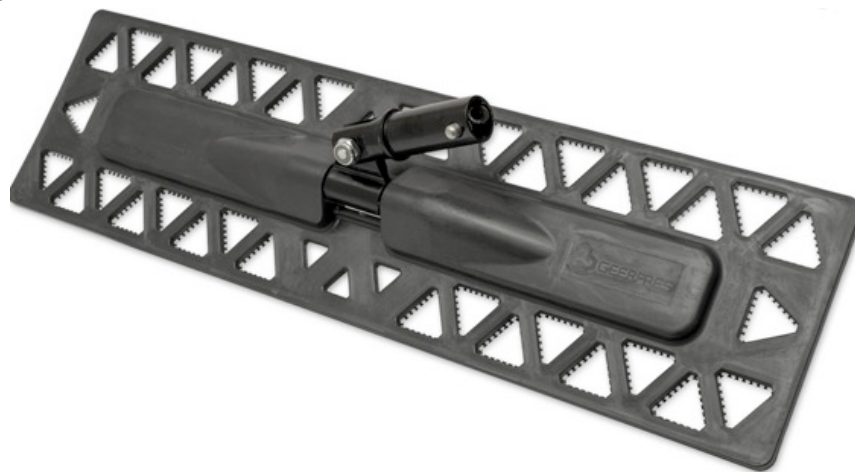


Cling-On® Revolutionary Flat Mop Frame

The revolutionary, new 16" Cling-On® Plastic Flat Mop Frame with Quick Connector easily converts your current mopping system.

Standard Features

- Frame has molded-in spikes – the mop clings to the frame
- Addresses ongoing issue of having to replace Velcro®
- Compatible with the Advantex® G8 Microfiber Applicator System
- Quick connect allows the Cling-On® to swivel 360°
- Made of 100% Post-Consumer Recycled Material
- Use with 16" and 18" traditional hook and loop microfiber mops
- Patent #9572472



Questions or Inquiries

Please contact your local Geerpres® Sales Representative or Distributor at

<https://www.geerpres.com/resources/sales-rep-locator/>

or

(231) 773-3211 or sales@geerpres.com