

# Healthcare Cleaning Solutions by Geerpres®



5/23/19



## Comprehensive Integrated Cleaning Solutions

In business for over 80 years, Geerpres® offers a comprehensive approach to cleaning solutions, specializing in the healthcare industry. Our system includes EVS carts, mopping systems, Advantex® microfiber (single-use) products, EVS management software, and air disinfection technology.

Geerpres® is focused on driving labor efficiencies, providing premier products, and reducing HAIs in an environmentally conscious manner.

**Geerpres® delivers an integrated system that includes**

- Premier, innovative equipment with proven, warranted quality.
- Advanced supplies, providing cleaner, safer environments.
- Labor efficiency in products and technology.

5/23/19

2

## Product Limited Warranties

For the period listed below, from the date of purchase, if any of these products proves defective in materials and/or workmanship during normal use by the original purchaser, Geerpres® will provide, at their discretion, repair or replacement providing all care and Maintenance procedures have been followed.

### **LIFETIME Limited Warranty Products:**

- Enterprise® EVS Carts
- Casino 'Slot' EVS Carts



### **10-Year Limited Warranty Products:**

- Buckets: Stainless Steel
- Wringers: Stainless Steel
- Project Trolley
- Orion Stainless Steel Cart



### **5-Year Limited Warranty Products:**

- Wringers: Zinc-plated
- Buckets: Galvanized



5/23/19

3



## Virtual Manager Software Program



Official Partner





## Why Geerpres® and Virtual Manager for Your Hospital or Facility?

- Geerpres® EVS carts can be fitted to hold mobile devices and tablets
- Helps increase HCAHPS scores and decrease HAIs
- Increases employee productivity, efficiency and accountability
- Customers report savings of 12% in labor productivity
- Ensures consistent methods are deployed based on facility-established parameters
- Provides access to data and analytics
- Manage workloads on-site or remotely
- Promotes a safer environment



5/23/19

## **What Does Virtual Manager's HealthClean Software Do?**

Paired with Geerpres® EVS carts, Virtual Manager introduces innovation to increase efficiencies, reduce waste or manual workload, and improve productivity.

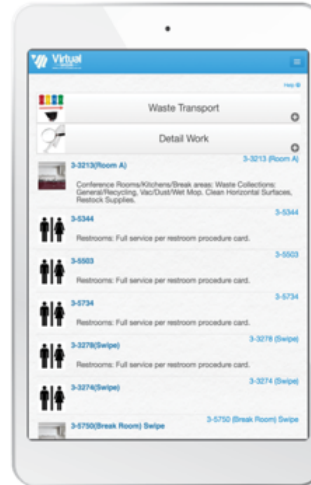
- Manage dispersed workforce in multiple locations
- Automate all processes and schedules with mobile devices
- Optimize labor efficiencies and improve productivity
- Monitor and validate completed work
- Improve quality and compliance
- Assure training and immediate visibility to work instructions
- Instantly accessible in any location
- Provide multi-lingual comprehension

5/23/19

6

## Virtual Manager's HealthClean User Interface

- Eliminate paper schedules and related management requirements
- Customizable to your facility process
- Increase communication between departments
- Document and timestamp completed tasks
- Employees get credit for their work
- Balance and transition employee workload
- Report maintenance issue and take pictures
- Training documents for new employees
- Simple and easy to use
- Available in 240 languages

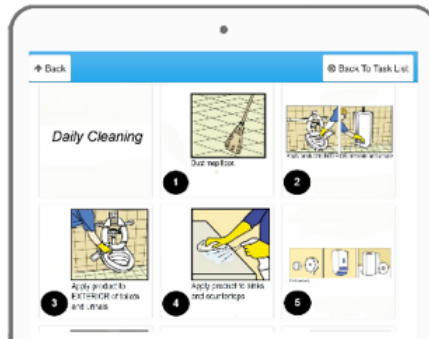


5/23/19

7

## Training and Procedures

- Ability to store training and procedural information onto tablets
- Improve the onboarding process of new employees
- Competency exams/videos can be embedded, required, with compliance monitoring



5/23/19

8



## Reporting Maintenance Issues

- Report issues to management
- Take pictures of incident
- Customizable list
- Store and document

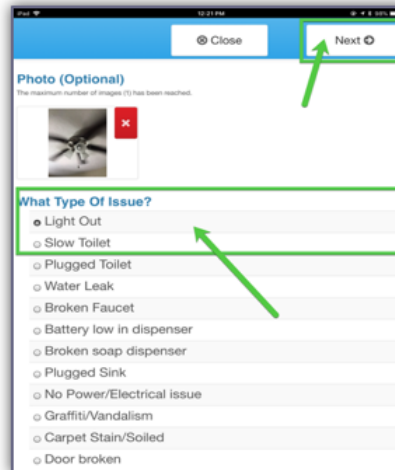


Photo (Optional)  
The maximum number of images (9) has been reached.

What Type Of Issue?

- ☒ Light Out
- ☐ Slow Toilet
- ☐ Plugged Toilet
- ☐ Water Leak
- ☐ Broken Faucet
- ☐ Battery low in dispenser
- ☐ Broken soap dispenser
- ☐ Plugged Sink
- ☐ No Power/Electrical issue
- ☐ Graffiti/Vandalism
- ☐ Carpet Stain/Soiled
- ☐ Door broken

5/23/19

9



## Standard Reporting

Task History

Managers Team Wide  
Day Summary

Time per Task

Checklist Details

Completed by  
System

Time between Tasks

Task Schedule

Memberships

Outstanding Tasks



Run on: 8/23/2018 11:38:11 PM

Run by: Super User

Sunday, July 1, 2018 to Tuesday, July 31, 2018

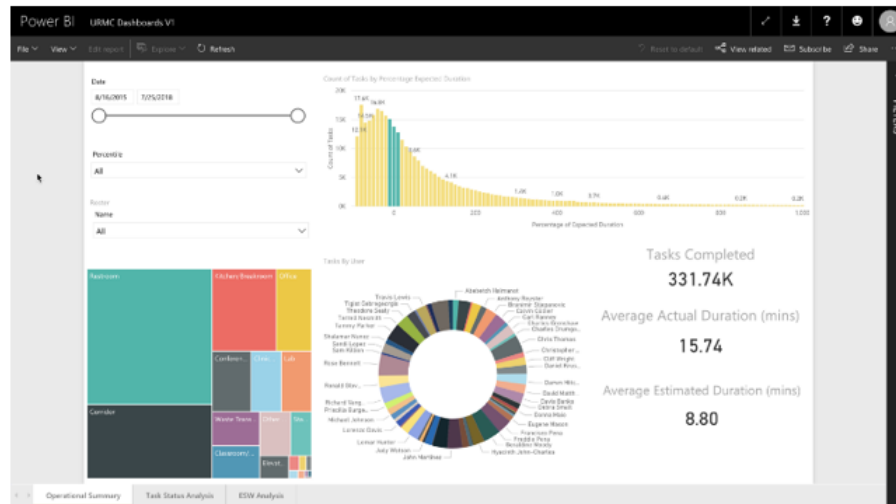
### Managers Team Wide Day Summary

Roster	Supervisor	Cancelled	Closed out by Supervisor	Closed out by System	Complete	Incomplete	Total	Completed Supervisor Tasks
D. Majors - A Shift 3456	Delmarisha Majors	1210	0	511	5782	168	6461	11
D. Passero - A Shift BG12	Super User	0	0	0	26	0	31	0
D. Passero - A Shift BG12	Dawn Passero	500	0	1634	5220	153	7007	26
T. Nesmith - B Shift	Terrell Nesmith	0	0	859	1646	37	2542	17
M. Johnson - SMD-MRB	Michael Johnson	631	0	1630	5604	47	7281	30
Manager	Shawn Rhoden	0	0	0	0	0	0	0
Manager	Christopher Licata	0	0	0	0	0	0	0
C Shift (All)	Terrell Nesmith	0	0	0	0	0	0	17

5/23/19

11

## Advanced Reporting with Microsoft Power BI



5/23/19

12

## Case Study – University of Rochester

### Impact

- Scheduling methodology saved 2 hours in travel time per floor, per day
- 1 hour/day gained in each staff member's productivity = 48 hours/day
- \$325,000+ year in staff labor savings
- 45% decrease in troubleshooting and customer complaints
- Automated collection of documentation and daily events for compliance
- Empowered staff, increased performance and personal accountability
- ROI in less than 4 months, including start-up costs

*"With Virtual Manager, we have seen a return on investment within four months, with that being extremely conservative. It is almost impossible to add up all the efficiencies that this tool can bring to your organization. There is no other product out there that can do everything that this product can do. It is easy to use, supports management and senior leadership with the reports that are provided. It's a winner!"* Mark Schwartz – Director of Medical Center Facilities – University of Rochester



## **Bring Ideal Labor Efficiency to Your EVS Environment**

For questions, inquiries or to set up your webinar demonstration,

please contact our Geerpres® Sales Team at

**(231) 773-3211 or [sales@geerpres.com](mailto:sales@geerpres.com)**