

Professional Cleaning Solutions by Geerpres®



Comprehensive Integrated Cleaning Solutions

In business for over 85 years, Geerpres® offers a comprehensive approach to cleaning solutions, specializing in the healthcare industry. Our system includes EVS carts, mopping systems, Advantex® microfiber (single-use) products, and EVS management software.

Geerpres® is focused on driving labor efficiencies, providing premier products, and reducing HAIs in an environmentally conscious manner.

Geerpres® delivers an integrated system that includes

- Premier, innovative equipment with proven, warranted quality.
- Advanced supplies, providing cleaner, safer environments in all Jan/San verticals.
- Labor efficiency in products and technology.

Product Limited Warranties

For the period listed below, from the date of purchase, if any of these products proves defective in materials and/or workmanship during normal use by the original purchaser, Geerpres® will provide, at their discretion, repair or replacement providing all care and Maintenance procedures have been followed.

LIFETIME Limited Warranty Products:

- Enterprise® EVS Carts



10-Year Limited Warranty Products:

- Buckets: Stainless Steel
- Wringers: Stainless Steel
- Project Trolley
- Orion Stainless Steel Cart



5-Year Limited Warranty Products:

- Wringers: Zinc-plated
- Buckets: Galvanized
- Casino 'Slot' EVS Carts



Microfiber Solutions: From the Floor Up

HAI Prevention Using Engineered
Single-Use Microfiber Solutions



THE ADVANTEX® ADVANTAGE
FROM THE FLOOR UP – THE BATTLE TO CONTROL HAIs

THE FLOOR COULD BE THE WEAKEST LINK IN FIGHTING HAIs
Pathogens are consistently introduced to the floor throughout the day by shoes, transport equipment such as wheelchairs and beds, treatment devices or computer carts, and non-slip patient socks that traverse the floors and frequently, directly into a bed. More importantly, there is a consistent potential for cross-contamination on the floor by an item expected to be clean and often handled without gloves, a freshly laundered mop.

FINANCIAL IMPACT
It was estimated in 2009 that 1.727 million HAIs occurred in hospitals in the United States that year resulting in 98,987 deaths, a rate of 5.8%.*
There were 29 million patient stays in hospitals during 2009.
• Average HAI cost of \$1,628 per admission.
• Total HAI cost of \$46.3 billion, represents 11% of total hospital spend in 2009.*

THE GEERPRES® SOLUTION
ADVANTEX® GB MICROFIBER APPLICATOR SYSTEM
The Advantex® GBs, large capacity removable tank makes mopping easy. The dual outlet dispenser to provide uniform application and flow control. The frame swivels 360° to reach tight spaces. Patent pending.

ADVANTEX® MOP FRAME
Utilizes micro hook and loop fastening, ideally suited for the Advantex® Single-Use Microfiber Mop.

ADVANTEX® SINGLE-USE MICROFIBER MOP
Best-in-class, single-use microfiber mops. Eliminate the risk of cross-contamination.

RESEARCH REVEALS MICROFIBER LAUNDERED MOPS CAN RETAIN RESIDUAL PATHOGENS
During a survey of five Cleveland-area hospitals, researchers found floors in patient rooms to be frequently contaminated with HAI pathogens including *Clostridium difficile* (C. diff), found in 44% of rooms cultured after patient discharge cleaning and 53% with the patient housed in the room.*
In eleven Arizona hospitals, a study to examine the effectiveness of bundling cloth and microfiber reusable towels used in cleaning and disinfection of rooms after terminal discharge of patients, revealed that viable microorganisms were found on 93% of the towels after laundering.*

THIS STUDY EVALUATED LAUNDERED MICROFIBER MOPS FROM ELEVEN HOSPITALS AND FOUND THAT 27.3% OF THE NEWLY LAUNDERED MOPS CONTAINED MICROBIAL CONTAMINATION, INCLUDING HAI PATHOGENS.

GEERPRES® PH 800.253.0373 sales@geerpres.com

View complete case study at www.geerpres.com/advantex-research/

From the Floor Up – “Fear the Floor”

Pathogens are consistently introduced to the floor throughout the day by shoes, transport equipment, treatment devices or computer carts, and non-slip patient socks.

Cleveland Area Hospital Study – 5 Locations

- *Clostridium difficile* (C. diff) found in 44% of rooms after discharge and cleaning.
- 53% found while patients still in the room.
- Of 100 occupied rooms, 41% of high touch objects had contact with the floor.

Arizona Hospital Study – 11 Locations

- 93% of laundered product tested positive for contamination.

Non-slip Socks Study

- 85% on socks and 69% of floor samples tested positive for VRE.
- Patients contaminate their beds upon returning to their room.

**Laundered/Washable
Microfiber Flat Mop
VS.
Single-Use Microfiber Flat Mop**

Comparative Analysis

Laundry Process

- Reduces the efficacy of microfiber products
- Does not eliminate cross-contamination pathogens

Cross-Contamination

- Ineffective wash processes reintroduce contaminated laundered mop back into a facility

Performance

- Removal of bio-burden is superior with virgin microfiber
- Floor coverage meets/exceeds patient room size requirements

Disinfectant Compatibility

- Launderable microfiber and most single-use microfiber are not disinfectant compatible

Environmental Impact

- Advantex® is 71% post-consumer recycled material
- Waste is nominal and can be recycled
- Advantex® is proven superior in environmental impact versus laundered mops

	Washable	Advantex® Single-Use
Reduces Detergents & Disinfectants by More Than Half	✗	✓
Delivers Disinfectant Without Neutralizing It	✗	✓
Water and Sewer Savings	✗	✓
Eliminates Energy Required for Laundering	✗	✓
Eliminates Chemical Footprint to Launder	✗	✓
Eliminates Energy Footprint to Dry	✗	✓
Water Conservation - Eliminates Wash & Waste Water	✗	✓
Reduces Global Emissions Footprint	✗	✓
Potential to Be Recycled	✗	✓
Eliminates Daily Transportation Cost / Gas Usage	✗	✓
Reduction of Manufacturing Environmental Footprint Cost, Energy, Watering Cotton, Pesticides, and Chemical Use Associated with Farming and Manual Labor	✗	✓

Challenges with Laundered Microfiber Mops

What makes microfiber good makes it bad to launder.

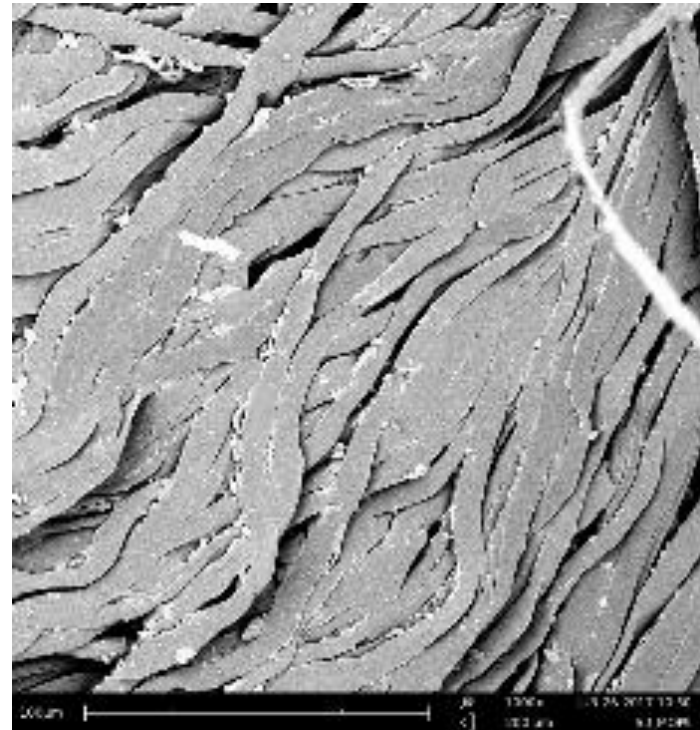
- Microfiber's cleaning properties make it difficult to release bioburden or pathogens in the laundry cycle.
- Microfiber allows detergent accumulation from repeat laundering.
- Laundering processes damage delicate microfibers.

Retained contamination may include bacteria, viruses and spores.

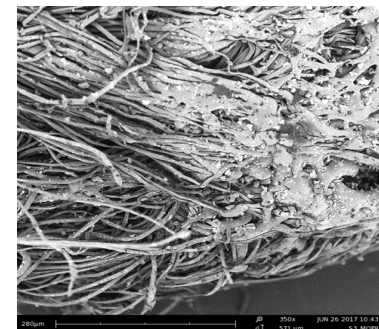
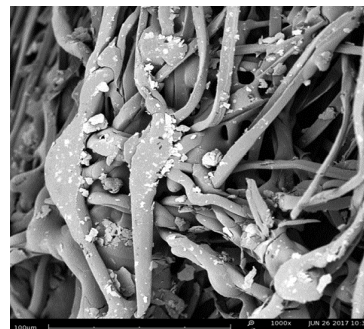
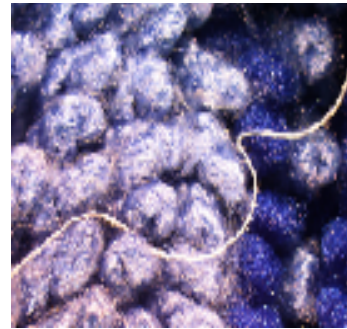
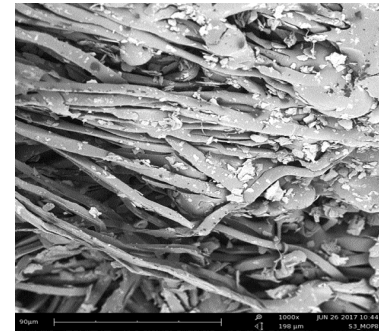
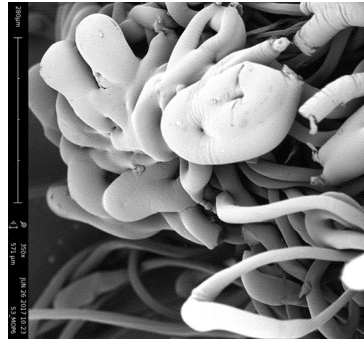
- These can and will survive inadequate or uncontrolled laundering processes.
- HAI implications result from harmful pathogens returning to your facility in a perceived "clean and sanitized" laundered mop.

Laundering Process - Current Reality

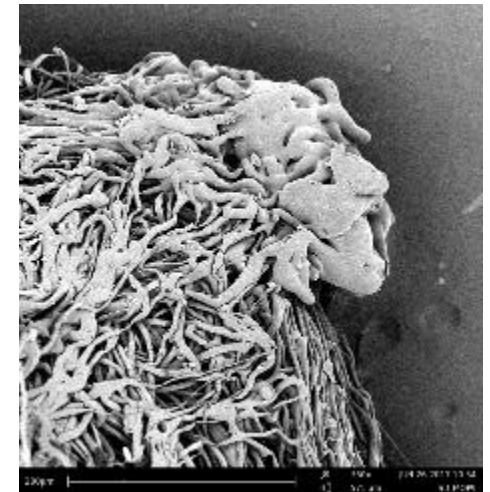
- Cross-contamination/HAI potential
- Insufficient quantities on-hand or inconsistent inventory controls
- Unknown mop origin (alternative hospital)
- Ineffective, aged, or melted mops
- Poor microfiber quality
- Unpredictable contracts and costs
- Constant chemistry waste
- Loss/replacement and disposal waste
- Required management time for reusable mop program
- Adverse environmental implications of laundered mops versus single-use options



Launderable Microfiber Mop Magnifications



At 1000x magnification, re-laundered “clean” microfiber flat mops reflect melted fibers, bio-burden and residual contaminates reintroduced to the environment.

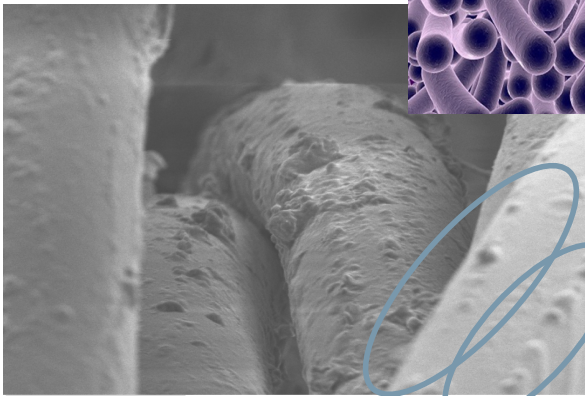


400x magnification reflects retention of unknown particulate.



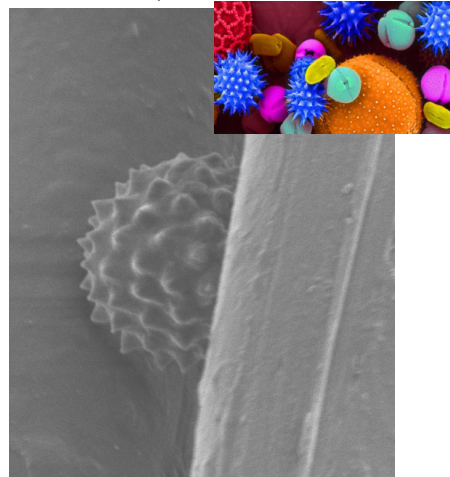
Laundered Mops Are Bacterial Reservoirs

Laundered Mop
(Clean and Examined)

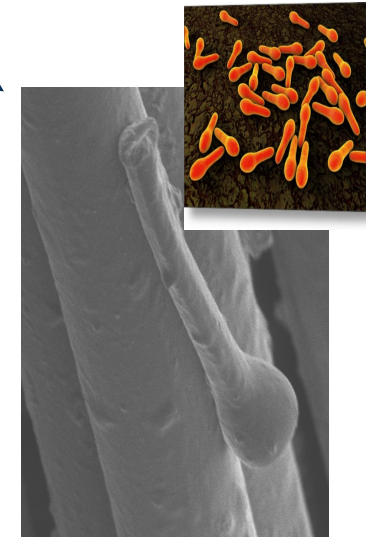


5/12/22

C. diff



Pollen



Clostridium tentani

Pathogenic Risks Using Laundered Microfiber

- 3 of 11 hospitals (27.3%) reveal returning HAI pathogens in clean laundered mops.
- 50% (3/6) of laundering services reflect adverse results (process failure).
- **35% of the laundered mops tested retained microbial contamination.**

DATA Result / # Microorganisms PER MOP					
SAMPLE #	TAC Ttl Aerobic Count	MRSA Staphylococcus	E-Coli Escherichiacol i	C-Diff Clostridium- difficile	Yeast
1	<1000	<1000	<1000	<1000	<1000
2	<1000	<1000	<1000	<1000	<1000
3	<1000	<1000	<1000	<1000	<1000
4	<1000	<1000	<1000	<1000	<1000
5	<1000	<1000	<1000	<1000	<1000
6	11,500,000	1,200,000	<1000	430,000	2,860,000
7	8,000,000	120,000	330,000	230,000	790,000
8	350,000	40,000	<1000	150,000	40,000
9	3,500,000	600,000	<1000	1,340,000	170,000
10	300,000	20,000	<1000	150,000	20,000
11	<1000	<1000	<1000	<1000	<1000
12	<1000	<1000	<1000	<1000	<1000
13	200,000	100,000	<1000	20,000	<1000
14	<1000	<1000	<1000	<1000	<1000
15	<1000	<1000	<1000	<1000	<1000
16	<1000	<1000	<1000	<1000	<1000
17	<1000	<1000	<1000	<1000	<1000
18	<1000	<1000	<1000	<1000	<1000
19	<1000	<1000	<1000	<1000	<1000
20	240,000	20,000	<1000	<1000	<1000
21* cloth	2,430,000	940,000	20,000	<1000	<1000

Disinfectant Compatibility

Comparison Overview

A CDC study found that quaternaries are good cleaning agents, but organic materials such as cotton can make them less microbicidal because insoluble precipitates absorb the active ingredients, otherwise known as “binding” the chemistry.

Solution for Controlling HAI Pathogens

Advantex® Single-use Microfiber Mops provide **100%** of original-strength disinfectant from the charging bucket to the cleaning surface or floor **100%** of the time.

	INITIAL Neutralizing QUATERNARY AMMONIUM Disinfectant reaching floor from test mop	1 HOUR Neutralizing QUATERNARY AMMONIUM Disinfectant reaching floor from test mop	3 HOURS Neutralizing QUATERNARY AMMONIUM Disinfectant reaching floor from test mop	INITIAL Neutralizing CHLORINE Disinfectant reaching floor from test mop	1 HOUR Neutralizing CHLORINE Disinfectant reaching floor from test mop	3 HOURS Neutralizing CHLORINE Disinfectant reaching floor from test mop
The Advantex® Advantage						
Advantex® Single-Use Mop	PASS	PASS	PASS	PASS	PASS	PASS
Competitor Single-Use Mop	PASS FAIL	FAIL	FAIL	PASS FAIL	FAIL	FAIL
Laundered Mop	FAIL	FAIL	FAIL	FAIL	FAIL	FAIL

Detergent and Disinfectant Compatibility

Can the Impact Be Quantified?

Advantex® Single-use Microfiber Mop

- 10 – Advantex® mops require only 1.5 gallons (5.6 liters) of chemistry solution.
- Chemistry remains active and effective indefinitely.

Laundered Mops

- 10 – Laundered mops require 4.0 gallons (15 liters) of chemistry solution.
- Chemistry is neutralized almost immediately, impacting an entire “charge” of mops.



Coverage Performance

MOP Absorbency and Application Efficacy											
MOP	Dry Wt. (g)	Wet Wt. (g)	Solution Absorbed Wt. (g)	Post Application Wt. (g)	Solution Delivery (g)	% Fluid Release	Floor Coverage (sq. ft.)	Solution Waste (g) per Use	% Fluid Waste	Quat Binding (1 Hr)	Quat Binding (3 Hr)
ADVANTEX®	18.8	168.9	150.1	24.9	144.0	95.9%	250	6.2	4.3%	NO	NO
Brand B	15.7	122.6	106.9	24.5	98.1	91.8%	168	8.7	8.9%	YES	YES
Brand C	13.2	141.0	127.8	37.6	103.4	80.9%	185	24.4	23.6%	YES	YES
Brand D	13.1	138.8	125.7	39.1	99.7	79.3%	178	26.0	26.1%	YES	YES
Brand E	22.8	205.1	182.2	68.1	137.0	75.2%	245	45.3	33.0%	YES	YES
Brand F	16.2	137.1	120.9	46.3	90.8	75.1%	158	30.1	33.1%	YES	YES
Brand G	12.5	130.9	118.4	48.6	82.2	69.5%	147	36.1	43.9%	YES	YES
Brand H	23.6	179.3	155.7	87.5	91.8	59.0%	159	63.9	69.6%	YES	YES
Laundered Mops	94.0	496.0	402.0	342.0	154.0	38.3%	267	248.0	61.0%	YES	YES

- Advantex® offers the highest coverage of any single-use mop! Patent pending.
- Launderable mops offer greater floor coverage but waste more cleaning solution than is actually used, which carries an increased operating cost.

Are You Wasting Disinfectant?

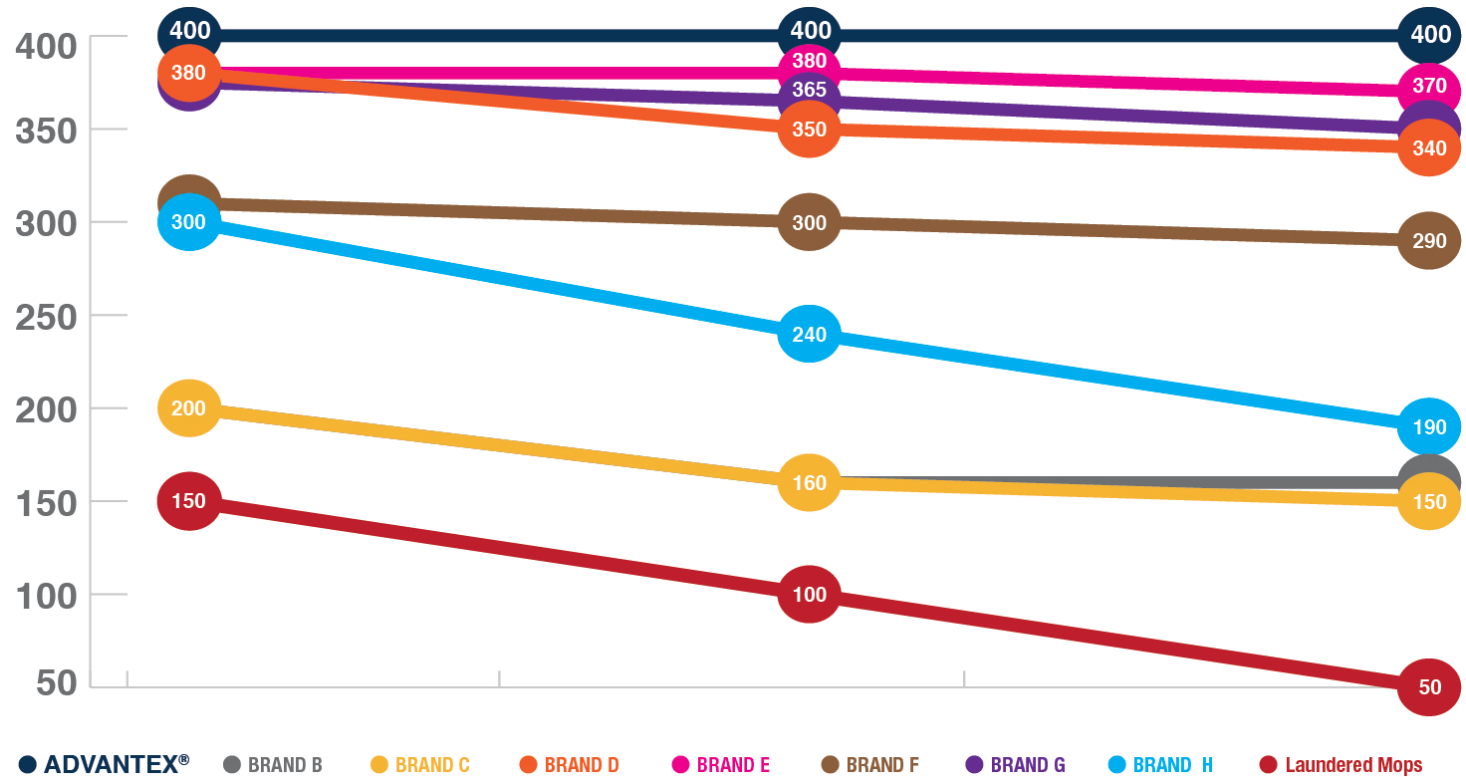
FLOOR MOP ABSORPTION COMPARISON

The Advantex® Advantage	Amount of Disinfectant to charge 10 mops	% Solution Release	% Solution Waste	After Charging Neutralizing QUATERNARY AMMONIUM Disinfectant	After Charging Neutralizing CHLORINE Disinfectant
Advantex® Single-Use Mop	0.5 gal	96%	4%	PASS (660 ppm)	PASS (500 ppm)
Competitor Single-Use Mop	0.5 gal	59%	41%	FAIL (<660 ppm)	FAIL (<500 ppm)
Laundered Mop	2.5 gal	38%	62%	FAIL (<660 ppm)	FAIL (<500 ppm)

Pass/Fail grade is based on the Centers for Disease Control and Prevention's recommendations of 660 parts per million of quaternary compatibility ammonium disinfectant or 500 parts per million of chlorine disinfectant. All mops were placed in clean charging buckets with equal amounts of disinfectant. The original disinfectant was 660/500 parts per million, respectively.

Moving to Single-use Mops

Microfiber Mops in Neutralizing Quaternary Ammonium Disinfectant
Quaternary Compatibility (1 MOP in 400 ML of 400 PPM)



Floor Mop Disinfectant Comparison Findings

FLOOR MOP DISINFECTANT COMPARISON FINDINGS

	INITIAL	1 HOUR	3 HOURS	INITIAL	1 HOUR	3 HOURS
The Advantex® Advantage	Neutralizing QUATERNARY AMMONIUM Disinfectant reaching floor from test mop	Neutralizing QUATERNARY AMMONIUM Disinfectant reaching floor from test mop	Neutralizing QUATERNARY AMMONIUM Disinfectant reaching floor from test mop	Neutralizing CHLORINE Disinfectant reaching floor from test mop	Neutralizing CHLORINE Disinfectant reaching floor from test mop	Neutralizing CHLORINE Disinfectant reaching floor from test mop
Advantex® Single-Use Mop	PASS	PASS	PASS	PASS	PASS	PASS
Competitor Single-Use Mop	PASS FAIL	FAIL	FAIL	PASS FAIL	FAIL	FAIL
Laundered Mop	FAIL	FAIL	FAIL	FAIL	FAIL	FAIL

Pass/Fail grade is based on the Centers for Disease Control and Prevention's recommendations of 660 parts per million of quaternary compatibility ammonium disinfectant or 500 parts per million of chlorine disinfectant. All mops were placed in clean charging buckets with equal amounts of disinfectant. The original disinfectant was 660/500 parts per million, respectively.

Bio-Burden (Soil) Removal

Glo germ/flour tests using various types of mops.

- Inexpensive but subjective.
- Single-use mops have a higher contact surface.

Lab Report 129

- Advantex® Mop removed soils better than new and laundered microfiber mops.
- Advantex® Mop is proven to provide a 3 to 4 log (99.9% to 99.99%) removal of bio-burden.
- New, reusable microfiber mops lose their efficacy to remove bio-burden through repeated wash and dry cycles.



1

2

3

4

5

6

1. Advantex®
2. Rubbermaid/Cintas-Used
3. Rubbermaid/Cintas-Used
4. Rubbermaid Hygen-New
5. Rubbermaid/Cintas-Used
6. Advantex®

Environmental Implications

Waste Considerations / Recycling Possibilities

Solid waste generated from Advantex® mops equates to 18 grams per mop.

In a fully occupied 500 bed hospital -

- Each staffed hospital bed creates 33 pounds/day of solid waste (4,396,425 pounds annually).
- Advantex® would produce approximately 41 pounds/day of solid waste (a 0.25% increase in waste generation).

Only Advantex® can be recycled, when processes become available as the scale of the single-use product increases.

- Advantex® contains 71% post-consumer material.



Life-Cycle Environmental Analysis

Study performed by Dr. Richard Venditti, College of Natural Resources at NC State University. He conducted an environmental impact life cycle assessment comparing reusable microfiber mops to the Advantex® Single-use Microfiber Mop.



Summary

The Advantex® Single-use Mop has significantly lower environmental impact than does the reusable mop in every environmental impact category in the EPA TRACI model.

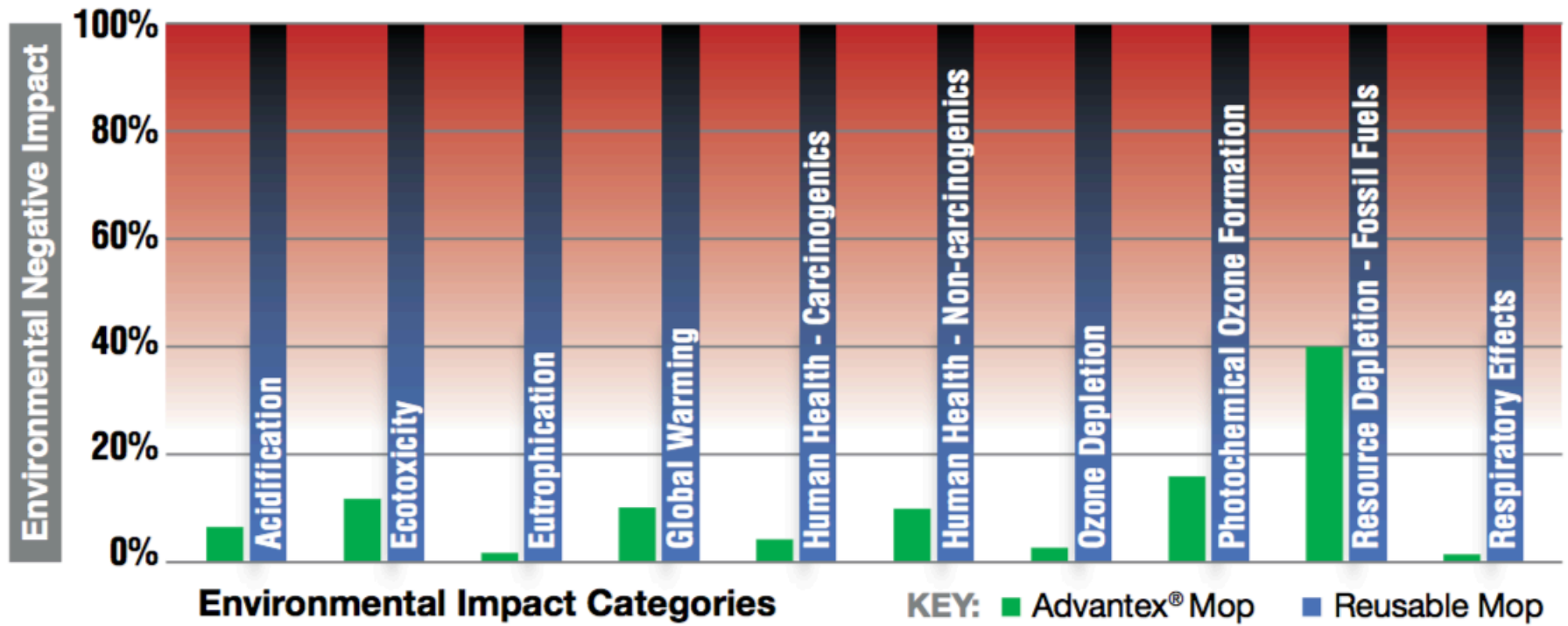
Report Model

Each type of mop was evaluated for 100 uses. The **Advantex® Single-use Mops** were each used one time then disposed of after transporting 20 miles to an incineration facility.

The **reusable mop** was used one time for each application, followed by a washing and disinfection step, followed by drying. The reusable mop was cleaned, dried, and transported 40 miles daily and then to an incineration facility. Cleaning of the reusable mop included the use of a washing machine and both detergent and bleach.

Life-Cycle Environmental Impact

The Advantex® Single-use Mop represents a fraction of the adverse environmental impact in comparison to laundered/reusable mops.



Summary

Microfiber Solutions: From the Floor Up

HAI Prevention Using Engineered Single-Use Microfiber Solutions



See our complete case study at www.geerpres.com/advantex-research/

Appendix/Sources

- From the Floor Up – White Paper
- Cleveland Clinic
- North Carolina State Univ. – Cross-Contamination
- Bacterial Testing – Flawed procedures (mop test regarding disinfectant)
- Demonstrate Quat Binding – Table top team demonstration
- Report 103-G – Quat Compatibility
- Report 104-G – Chlorine Compatibility
- Report 105-G – Microscopic Analysis
- Report 107-G – Microbiological Mop Testing
- Report 110 – Glo Germ Methodology
- Report 127 – Bacteria on Mops
- Report 128 – Glo Germ on Laundered Mops
- 1893 Mop Patent
- EPA Mop Testing
- Improving the Cleaning Environment
- 1966 Cleaning of Hospital Floors
- Becker's Infections – HAI Unintended Costs
- AJIC – Hospital Floors Underappreciated
- Journal of Hospital Infection – Non-Slip Socks for Bacteria
- Journal of Hospital Infection – Contamination of Laundered Cloths
- Microbiological Test Method
- Forceps- Disposable vs. Reusable
- Microfiber Cloth Efficacy Decreases with Washing
- CDC Disinfection 2008
- CDC Inactivation of C diff
- Infection Control Today – State of the Industry 2017
- APIC and Hospital Floors
- Journal of Hospital Infection – Assessing Microfiber Efficacy
- Infection Control Today – HAI Prevention
- AJIC – Microbial Contamination of Reusable Microfiber

Appendix/Sources

- Pub Health Reports – Estimating Health Care-associated Infections and Deaths in U.S. Hospitals
- National Center for Preparedness, Detection, and Control of Infectious Diseases Coordinating Center for Disease Control and Prevention – The Direct Medical Costs of Healthcare-associated Infections in U.S. Hospitals and the Benefits of Prevention
- American Journal of Infection Control – Are Hospital Floors an Underappreciated Reservoir for Transmission of Health Care-associated Pathogens?
- American Journal of Infection Control – Microbial Contamination of Hospital Reusable Cleaning Towels
- Journal of Hospital Infection – Non-slip Socks: A Potential Reservoir for Transmitting Multidrug-resistant Organisms in Hospitals?
- Ecolab – Quat Absorption on Textiles Absorption of Cleaning Cloths
- Life Cycle Analysis – XLS Data Sheet to Evaluate Costs
- Professor Richard Venditti – North Carolina State University
- CDC Website – <https://www.cdc.gov/infectioncontrol/guidelines/disinfection/disinfection-methods/chemical.html>
- The Green Lantern, Illuminating Answers to Environmental Questions – Wasting Syndrome-How Much Trash Do Hospitals Produce?

ADVANTEX Advantage

Our entire Advantex product line is systematically designed for all healthcare/clinical, terminal, cleanroom, and food service applications.

Eliminate the need to use laundering services with a comprehensive line of single-use products.



Advantex[®]

Single-Use Microfiber Mop

Standard Features

- Available in three sizes – 18", 36" and 48"
- Significantly lower environmental impact than laundered mops (see life-cycle analysis)
- Compatible with all disinfectants, including quats, chlorine and peroxides
- Non-linting, USP 797 compliant
- Covers 250 sq. ft. per mop
- Best-in-class solution volume delivery with the least waste of any similar product (supporting data available upon request)
- Microfiber performance with effective, consistent bioburden/bacteria removal (3-4 log)
- Efficient cleaning impact in comparison to laundered mops
- Patent #11045063



Advantex Loo-Mop

Standard Features

- Use a sustainable toilet brush versus waste associated with plastic toilet brushes
- Comprised of 100% biodegradable materials
- Improve EVS cart cleanliness, eliminating toilet brush buckets, drips and spills
- Multi-layered, 4" diameter pads with durable fibers
- Avoid the risk of disposable pads clogging toilets and drains
- 14" long overall and 1.5 oz. each with a slightly curved bamboo handle to reach crevices
- Durable for multi-use through a single-use design to reduce cross-contamination risks



Advantex Additional Mops

Advantex Single-Use Strap Mop

- Compatible with all Geerpres® wringers, the Geerpres® DynaMate®, and other traditional mop holders
- Composed of a 1.5" band and microfiber straps
- Quickly absorbs large spills and can absorb up to 84 oz. of fluid
- Tremendous cleaning efficacy with grease, oils, and antifreeze



Advantex High-Absorbency Single-Use Mop

- 18" single-use mop works with the 16" Advantex® Single-use Mop and traditional Velcro® frames
- Designed to absorb spills quickly using a flat mop handle without the mess of a bucket and wringer
- Absorbs up to 32 oz. in 2-4 minutes with no drips or leakage from floor to trash



Advantex® Single-Use Microfiber Wipes

Standard Features

- 10" x 12" canister wipes are constructed of 48 GSM hydroentangled, synthetic microfibers
- 12" x 12" flat and ¼ fold wipes are constructed of 70 GSM hydroentangled, synthetic microfibers
- Compatible with all disinfectant solutions, including quats, chlorine and peroxides
- Extremely durable and have tremendous absorbency and release in a single-use option
- Non-linting, USP 797 compliant
- Effective, consistent bio-burden removal (3-4 log)
- Dispenser is reusable, if desired



Soft Cost Benefits

- Heightened sensitivity and awareness of infection prevention
- White mops provide immediate employee feedback on mop efficacy
- New white mops improve patient perception of staff's tools
- Point-of-use storage – inventory control
- Process improvement with laundry stream management
- Great staff engagement and efficiency
- Reduced staff turnover, training costs



Benefits of Single-Use Mops and Wipes

- Microfiber efficacy, achieving optimal infection prevention
- Eliminating risks of cross-contamination
- Patient safety and reduced HAI risks
 - Full-strength disinfectant applied with each use
 - Undamaged microfiber with each use
 - Virgin, bacteria-free, microfiber mops in each use
- Staff engagement and operational efficiency
 - Reduces management time and labor vs. laundering
 - Offering a laundry-free, effective, microfiber cleaning solution
- Environmentally conscious with nominal solid waste
- Favorable impact on patient satisfaction (HCAHPS)
- Reduced waste (disinfectants, applications, energy, water)



Advantex Single-Use Floor Duster

The Advantex Single-use Microfiber Floor Duster is designed to attract and hold dust and debris with the microfiber mop and looped fringe. The mops are compatible with most 5" wide floor duster frames.



Frame sold separately.

Fluid Applicator Systems

Advantex G8 Microfiber Applicator System

The Advantex G8's revolutionary, large-capacity removable tank makes refilling easy. The dual outlet dispenses to provide uniform application and flow control.

Standard Features

- Unique to Geerpres® - 32 oz. refill bottle stacks on EVS carts
- Ergonomic swivel trigger
- Continuous flow when the trigger is depressed
- Dual outlet dispenses fluid at 90° angle
- Unique, durable mop frame with uniform surface pressure
- 16" Advantex Mop Frame is designed with micro hook and loop fastening to avoid lint accumulation
- Mop frame maintains 100% surface contact
- Ideally paired with the Advantex Single-use Mop
- Patent #10682034



CAT G7 – Backpack Fluid Applicator

Designed for comfort and efficiency, our completely self-contained microfiber system is lightweight with an ergonomic backpack.

Standard Features

- Lightweight powder-coated aluminum handle
- Swivel trigger moves with operator's natural movements
- Dual outlet dispenses fluid at 90° angle to eliminate liquid collecting on the mop frame
- Refillable chemical bags (1.5-gallon capacity) are easy to fill and install
- Sturdy, adjustable backpack design with breathable mesh
- Interchangeable 16" Cling-On Nylon Flat Mop Frame
- 7' chemical feeder hose with cap and connector
- Refillable chemical bag (1.5-gallon capacity)

Ideal Combination Includes

- Easy Refill Stand for refillable chemical bag
- Pressurized Clean-out Tool (Only offered by Geerpres®.)



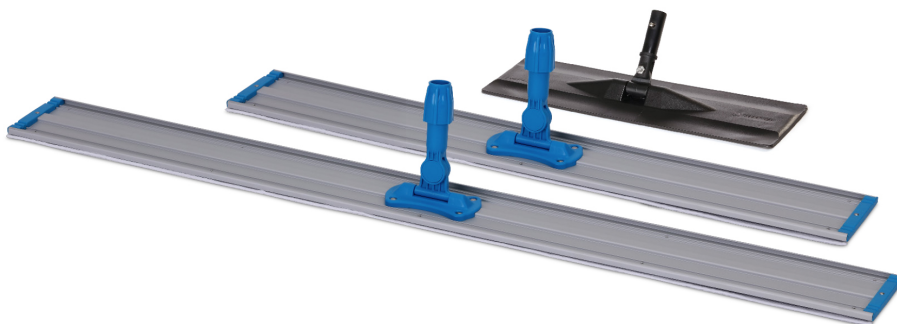
Flat Mop Frames

Advantex Mop Frames

Our standard mop frames are available in three sizes - 18", 36", and 48".

Standard Features

- Frame utilizes micro hook and loop fastening
- Ideally paired with the Advantex® Single-use Microfiber Mops
- Maintains 100% uniform contact with the mop and floor surface
- Unique quick connector swivels 360° for an efficient figure eight motion and flips up for easy cleaning of baseboards
- No replacement parts or linting Velcro® strips

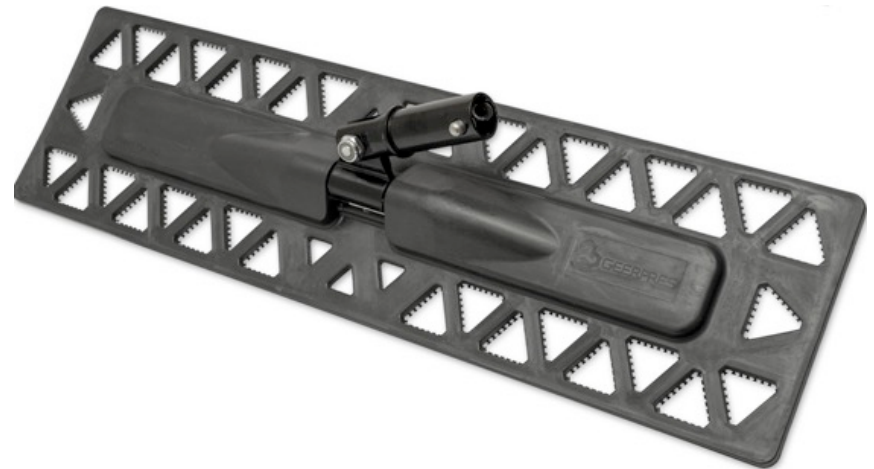


Cling-On Revolutionary Flat Mop Frame

The revolutionary 16" Cling-On Plastic Flat Mop Frame with Quick Connector easily converts your current mopping system.

Standard Features

- Frame has molded-in spikes – the mop clings to the frame
- Addresses ongoing issue of having to replace Velcro®
- Compatible with the Advantex G8 Microfiber Applicator System
- Quick connect allows the Cling-On to swivel 360°
- Made of 100% Post-Consumer Recycled Material
- Use with 16" and 18" traditional hook and loop microfiber mops
- Patent #9572472



Complete Integrated Solutions

EVS Carts, Special Order Carts & Collector Carts

EVS Carts

Enterprise® Cart
Escort® PC Cart



Enterprise[®] EVS Cart

The modular Enterprise[®] EVS cart is ideally designed for the healthcare industry and configurable to suit various cleaning protocols. The Enterprise[®] is at the heart of a comprehensive approach to advanced cleaning solutions.

Enterprise[®] EVS Cart Video

www.geerpres.com/resources/product-videos/



Enterprise® EVS Cart

Standard Features

- Stainless steel or powder-coated finishes
- 6.2 cubic feet of lockable storage space
- Three tray options for various mop and bucket configurations
- Magnetically secured door to assure closure in transit
- Non-marking bumpers and quiet casters
- Unbreakable Geer-Key® locking system
- 25-gallon waste bag with C-zipper and multiple pockets
- Multiple Gripit bars, with three tool/handle holders and four hooks
- Repositioning handle adapts for varying configurations
- Cabinet mount double sign holder
- Powder-coated glove box holder and trash lid
- Sanitizer bottle holder



Enterprise® EVS Cart

Cart Options and Accessories



Our powder-coated tablet holder is compatible with both mobile devices and tablets. Locks with the Geer-Key® Locking System for additional security.
MODEL #380036



Dry Dock Two-shelf Storage
MODEL #100076



Microfiber Bag System
MODEL #100112



Sanitizer Bottle Holder
MODEL #380038



Powder-coated glove box hangs on the inside or outside of the door.
MODEL #380037



Gripit Tool Holders / Hooks
MODEL #5045 / #5051



Cabinet / Handle Mount Double Sign Holder
MODEL #9916 / #9921

Escort PC EVS Cart

Standard Features

- Features 4.8 cu. ft. interior storage space
- Powder-coated metal construction
- Heavy-duty 25-gallon single-zipper bag
- Front roller bumpers to protect walls and furniture
- Fully assemble option available



Special Order Trolleys & Carts

Project Trolley

Casino “Slot” Cart

Modular Multi-Bucket Mopping Systems

Project Trolley

Keep your healthcare environment clean and professional with an equipment cart big enough to haul everything. Our Project Trolley features 18-22-gauge, corrosion-resistant, Type 304 stainless steel construction with a 10-year limited warranty.



Project Trolley

Standard Features

- 5" double-bearing, quiet casters (two swivel and two swivel with brake)
- 6.2 cu. ft. lockable storage cabinet keeps chemicals secure
- Increased productivity due to large capacity — fits everything needed for a shift and eliminates multiple trips to storage closet
- 14 tool holders to safely secure mop handles, dust mops, brooms and more
- High-quality, non-marking corner bumpers
- Access ramp has anti-slip strips and flips up for moving and storing of cart
- Heavy duty tool holder for larger equipment
- Patent pending

Casino “Slot” Cart

The Geerpres® Casino “Slot” Cart is designed to easily maneuver through crowded or narrow casino floors allowing staff to quickly and efficiently access all areas for EVS purposes.

Standard Features

- Black powder-coated steel construction
- 7.0 cu. ft. cabinet with trash can drop-top
- Narrow design and only weighs 64 lbs.
- Optional slide-out ash collection holder
- Magnetic door to assure door remains closed in transit
- Inside door built-in cleaning supply caddy
- 5" carpet casters (two swivel and two fixed)
- Non-marking corner bumpers to protect walls
- Two Griptool holders and two tool hooks
- Dual receptacle option for recycle and waste items



Modular Multi-Bucket Mopping Systems

Design your perfect multi-bucket cleaning trolley with our modular system. Select the bucket and wringer combination that works best for your environment.

Standard Features

- Cart, buckets and wringers are made from Type 304 electropolished stainless steel
- Ergonomic handle
- Fully autoclavable
- Minimal harbor points
- Ideal for cleanroom use



Collector Carts

Linen Hamper
Collector Cart

Linen Hamper

Designed for efficiency and safety, the Linen Hamper has a narrower profile, allowing unobstructed pathways and reduced workman's compensation claims. HCAHPS scores can be improved with a unique and silent close.

Linen Hamper Video

www.geerpres.com/resources/product-videos/



Linen Hamper

Standard Features

- Tubular steel construction for superior resilience and cleaning simplicity
- Silent close to improve HCAHPS scores
- Unbreakable steel lid with multi-lingual labels (linen, waste, hazardous)
- Professional, clean powder-coated finish
- Heavy-duty nylon pouch to retain liner(s)
- Locking front casters
- Protective measures to reduce wall damage
- Heavy-duty nylon curtain (available option)
- Designed to prevent overfilled liners and assure < 50 lb. lifting
- Narrower profile as it sits against a wall
- Optional hamper curtain available with or without custom logo
- Optional connectors to link multiple links together
- Fully assembled option available
- Patent #10421573

Collector Cart

Standard Features

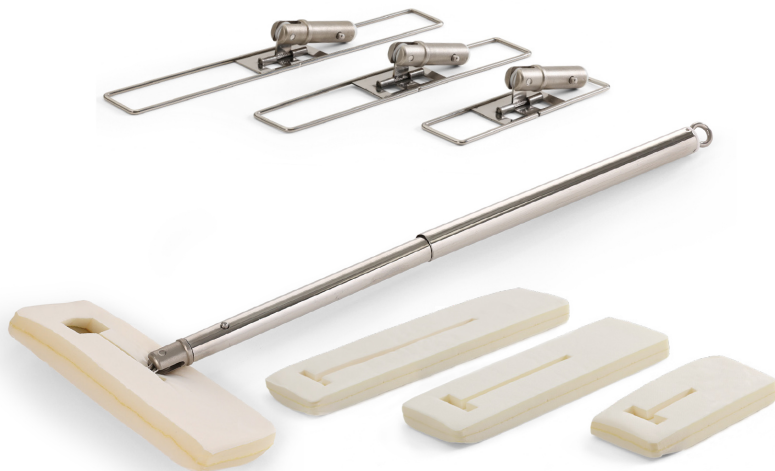
- Folding chrome-plated steel frame folds and locks to a minimal size for storage
- Large C-zipper 50-gallon bag
- 3" wheels – non-marking, easy-to-maneuver, and maintenance-free
- Optional heavy-load bottom shelf for added support helps extend the life of the bag
- Optional all-purpose nylon caddy cover



Wall Washing, Flat Mopping & High Dusting Systems

Modular Cleaning Systems

Pick your handle, frame, mop or duster and you are all set. Telescoping aluminum handle reaches high places and options extend from 42 to 92. Both mopping and high duster attachments with quick connect available to create a multi-purpose tool. **All parts are ordered individually.**



Additional part options available.

Geerpres® Buckets

Geerpres® Buckets

Stainless Steel Round Bucket

- Rolled, open rims prevent accumulation of dirt/bacteria
- Leak-free and easy to sanitize
- Permanently-etched gradations included
- Available in 8- or 11-gallon, with or without casters, bumper



Galvanized Round Bucket

- Hot-dip zinc galvanized for maximum strength
- Heavy wire reinforcement formed into top rim
- Perimeter-reinforcing rib indicates two-gallon increments
- Available in 8-gallon, with or without casters, bumper



Seaway® Galvanized Oval Bucket

- Hot-dip zinc galvanized to seal all seams
- Reinforced bands and rolled rim for strength
- Permanently-etched gradations included
- Available in 26- or 35-quart with or without casters



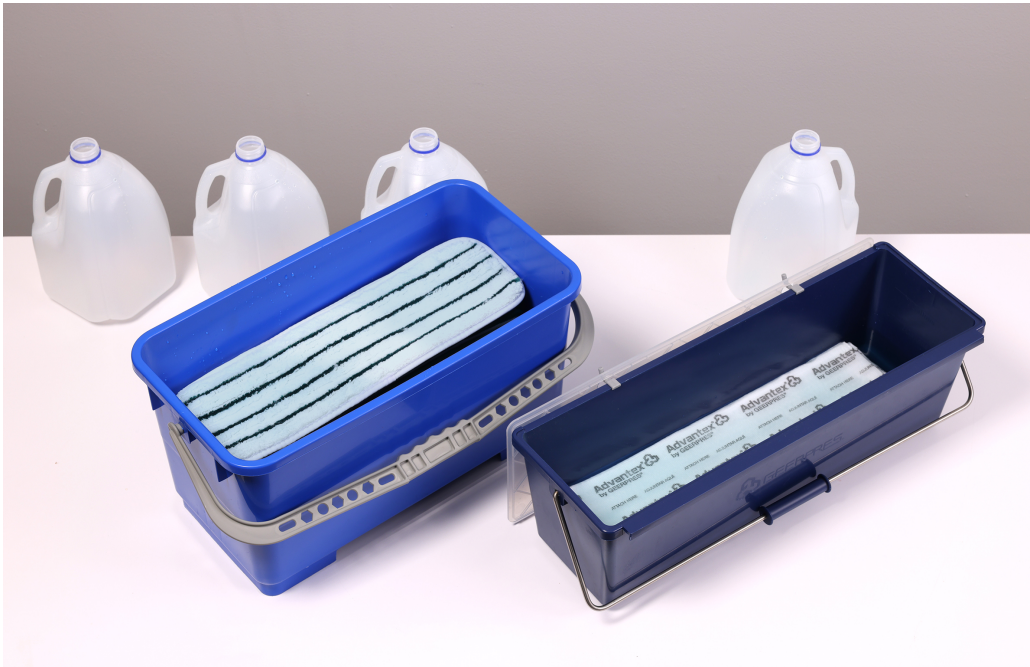
Advantex Flat Mop Charging Bucket

Standard Features

- Place the charging bucket in the front of the cart or under the rear back to store soiled mops
- 4-gallon, 16 liters
- Positions securely to the Enterprise® EVS Cart to avoid sliding
- Designed for up to 50 or more Advantex® Mops
- For multiple bucket use, buckets can lock together and reduce spills
- Stainless steel handle with ergonomic grip included
- Reduced EVS cart weight with less charging fluid requirements
- Lid hangs from bucket hooks to avoid loss and secure fitting on the cart
- Autoclavable option available on a special order basis (volume-based pricing)



Advantex Charging Bucket Challenge



Traditional Laundered Charging Bucket (Left)

- Requires 3x the fluid chemistry (6-gallon size)
- Generates 40x solution waste
- 3x the weight

Advantex Microfiber Charging Bucket (Right)

- Requires much less fluid chemistry (4-gallon size)
- Reduces bucket and EVS cart weight
- Generates minimal solution waste

Additional Buckets

Microfiber Flat Mop Plastic Charging Buckets

- 6-gallon (22-liter) capacity
- Ideal charging buckets for flat mops
- Available in blue or red without casters, gray with screen and casters



Champ Plastic Bucket

- Made from foam polymer that will withstand years of continuous wringing action
- Single-bail design virtually eliminates bail pull-out and pinched hands
- Unique double-wall design keeps bucket sides smooth and free of protruding supports
- Built-in bumper keeps bail and casters from damaging walls
- Double-raceway, ball-bearing casters included
- High-security option available



Geerpres® Wringers

Geerpres® Wringers

Seaway® Zinc-Plated Sidepress Wringer

- Easy top-to-bottom squeezing action forces water down into the bucket
- Solid steel main shaft
- Can be used on a variety of buckets, including plastic
- Reinforced steel bottom band for stable operation and reduced bucket wear



Prince® Zinc-Plated Downpress Wringer

- Offered **only** by Geerpres®
- Wrings mops up to three times faster than other designs
- Welded and riveted construction, PLUS zinc electroplating
- Long-wearing steel bushings where the gear shaft enters the side plate



Ultra® Plastic Downpress Wringer

- Constructed of nylon reinforced with fiberglass for added strength
- Available in high-security/prison option
- Smooth, hard surface offers superior resistance to staining and abrasion



Cleanroom/Critical Environment Products

Stainless Steel Wringers

The Geerpres® Stainless Steel Downpress Wringer is the only electropolished option, creating a smooth surface so bacteria and particulate cannot attach.

Standard Features

- Made from Type 304 electropolished stainless steel to resist abrading, rusting, discoloring or staining in normal use
- Downpress action wrings mops up to three times faster than conventional wringers to boost productivity and reduce costs
- Wringer is autoclavable
- For 16-24 oz. mops

Please see our complete line of wringers at geerpres.com



Stainless Steel Buckets

All Geerpres® stainless steel buckets are made from Type 304 stainless steel and have rolled, open rims that reinforce the bucket and prevent accumulation of dirt and bacteria.

Standard Features

- Seamless construction keeps buckets leak-free and easy to sanitize
- Bail ears are positioned below rims to avoid interference with wringer placement
- 3" stainless steel (greaseless) casters allow ease of movement as well as sanitation
- With proper care and maintenance, these buckets can provide a lifetime of corrosion-free use and will retain their clean, attractive appearance
- Autoclavable
- Available in 5-, 8-, 11-gallon capacity with caster/bumper options



Please see our complete line of buckets at geerpres.com

Iso-Clean® Stainless Steel Isolator Cleaning Tool

Designed to easily fit into and clean isolation chambers. Handle is constructed of electropolished stainless steel and provides ease of use and protection from moisture, bacteria and corrosion.

Standard Features

- Specially designed handle is sealed at the end and welded where mop frame attaches
- Hook included at the end of the handle for hanging
- Easy to use locking device extension mechanism
- Handle extends 16" – 23"
- Fully autoclavable – meeting the strictest requirements
- Rectangular head frame with rounded corners to prevent equipment damage



Questions or Inquiries

Please contact your local Geerpres® Sales Representative or Distributor at

www.geerpres.com/resources/sales-rep-locator/

or

(231) 773-3211 or sales@geerpres.com